

Solid Waste Management

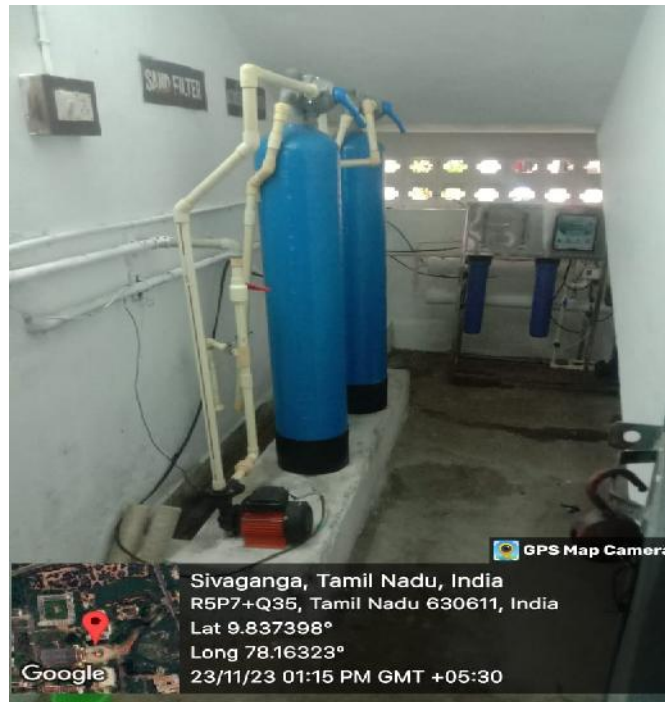
A bio-gas based turbine generator set is installed nearer to the Men's hostel. The food wastages from the hostel and canteen are used as the input to the bio gas plant. This AICTE funded project is ongoing. During the initial period, cow dung is used inside the bio gas plant to initiate the production of bio gas from the plant. Once the plant starts functioning, the food wastages are dumped into the bio gas plant. The gas produced is usually used for cooking purpose. It is planned to utilize this bio gas to generate electricity. The turbine generator is connected to fan and tube light in the Men's hostel. The bio gas produced from the plant is stored in the balloon and the pressurized gas is used to rotate the turbine which is coupled to 1kW synchronous generator. The power produced from this AC generator can be directly fed in to the lighting load.



Liquid Waste Management Waste Water Recycling



This plant is located nearer to the Ladies Hostel. Here drainage water is filtered and recycled by various water treatment processes. This recycled water is used for watering the plants in gardens.



This mineral water plant is located in men's hostel ground floor.